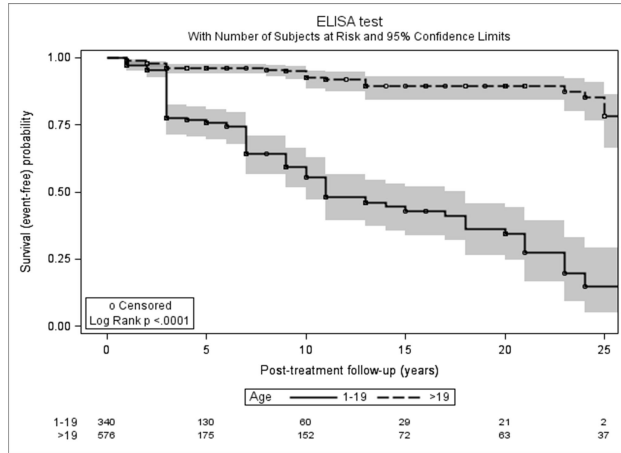
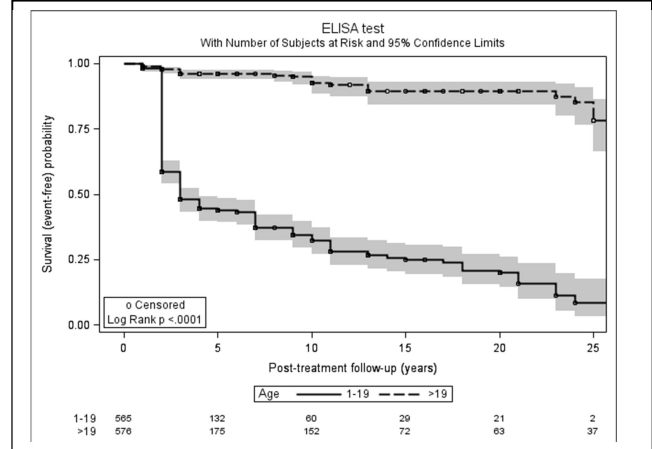


Figure 2: Kaplan-Meier plots of the evolution of ELISA, IIF and IHA test results with numbers of subjects at risk and 95% IC.

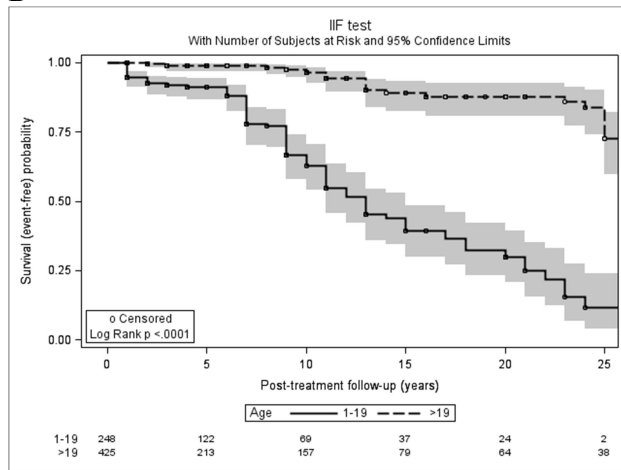
A.1-All data



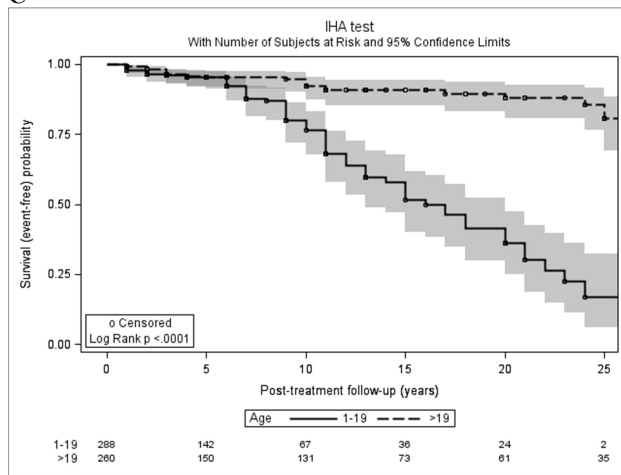
A.2-Without data of children from Honduras



B



C



Plots show the proportion of treated subjects having a negative ELISA (A.1:all data; A.2:without data from a cohort of children from Honduras where TcI genotype is prevalent), IIF (B), and HAI (C) test results during the follow-up, stratified by the age at treatment (1–19 years vs > 19 years). IC=interval confidence. ELISA=enzyme linked immunosorbent assay. IIF= indirect immunofluorescence. IHA= indirect hemagglutination assay.